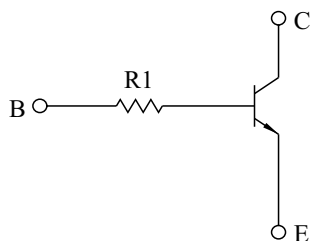


SWITCHING APPLICATION.
INTERFACE CIRCUIT AND DRIVER CIRCUIT APPLICATION.

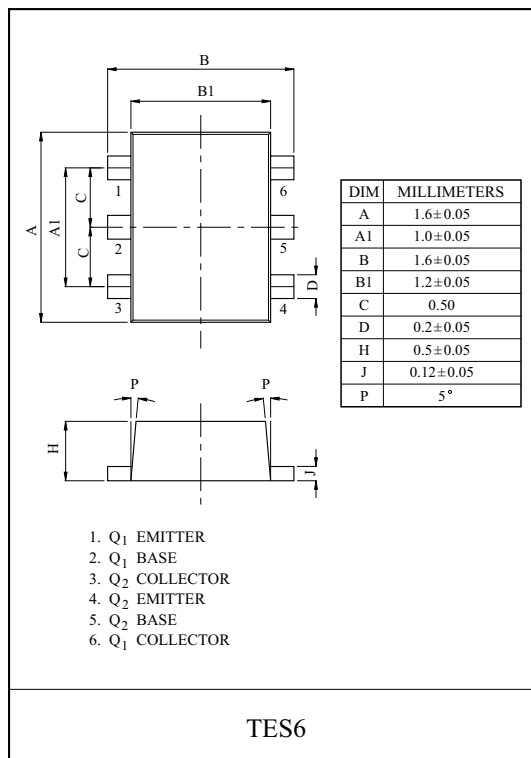
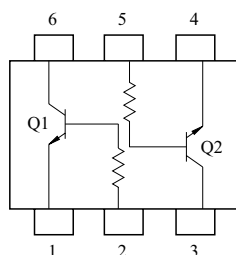
FEATURES

- With Built-in Bias Resistors.
- Simplify Circuit Design.
- Reduce a Quantity of Parts and Manufacturing Process.
- High Packing Density.

EQUIVALENT CIRCUIT



EQUIVALENT CIRCUIT (TOP VIEW)



MAXIMUM RATING (Ta=25℃)

| CHARACTERISTIC | SYMBOL | RATING | UNIT |
|---------------------------|------------------|--------|------|
| Collector-Base Voltage | V _{CBO} | 50 | V |
| Collector-Emitter Voltage | V _{CEO} | 50 | V |
| Emitter-Base Voltage | V _{EBO} | 5 | V |
| Collector Current | I _C | 100 | mA |

| CHARACTERISTIC | SYMBOL | RATING | UNIT |
|-----------------------------|------------------|-----------|------|
| Collector Power Dissipation | P _C * | 200 | mW |
| Junction Temperature | T _j | 150 | ℃ |
| Storage Temperature Range | T _{stg} | -55 ~ 150 | ℃ |

* Total Rating.

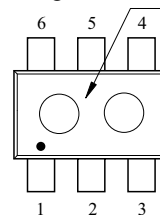
ELECTRICAL CHARACTERISTICS (Ta=25℃)

| CHARACTERISTIC | SYMBOL | TEST CONDITION | MIN. | TYP. | MAX. | UNIT |
|--------------------------------------|----------------------|---|------|------|------|------|
| Collector Cut-off Current | I _{CBO} | V _{CB} =50V, I _E =0 | - | - | 100 | nA |
| Emitter Cut-off Current | I _{EBO} | V _{EB} =5V, I _C =0 | - | - | 100 | nA |
| DC Current Gain | h _{FE} | V _{CE} =5V, I _C =1mA | 120 | - | - | |
| Collector-Emitter Saturation Voltage | V _{CE(sat)} | I _C =10mA, I _B =0.5mA | - | 0.1 | 0.3 | V |
| Transition Frequency | f _T * | V _{CE} =10V, I _C =5mA | - | 250 | - | MHz |
| Input Resistor | KRC860E | R ₁ | - | 4.7 | - | kΩ |
| | KRC861E | | - | 10 | - | |
| | KRC862E | | - | 100 | - | |
| | KRC863E | | - | 22 | - | |
| | KRC864E | | - | 47 | - | |

MARK SPEC

| TYPE | KRC860E | KRC861E | KRC862E | KRC863E | KRC864E |
|------|---------|---------|---------|---------|---------|
| MARK | NK | NM | NN | NO | NP |

Marking Type Name

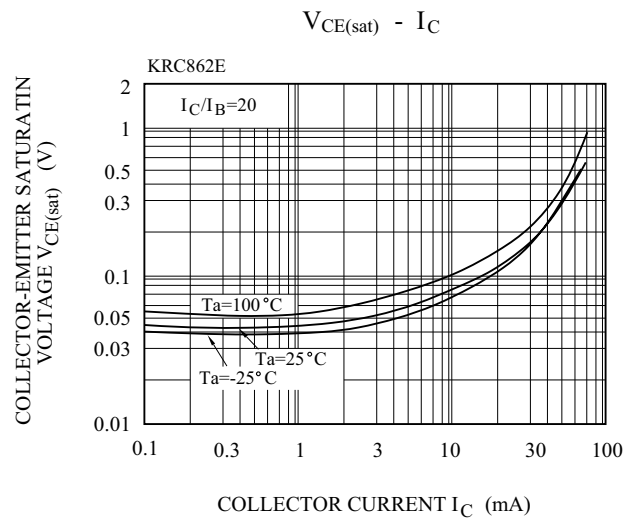
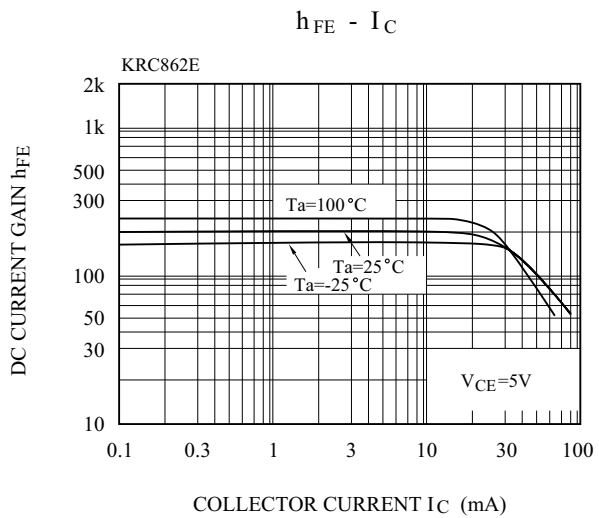
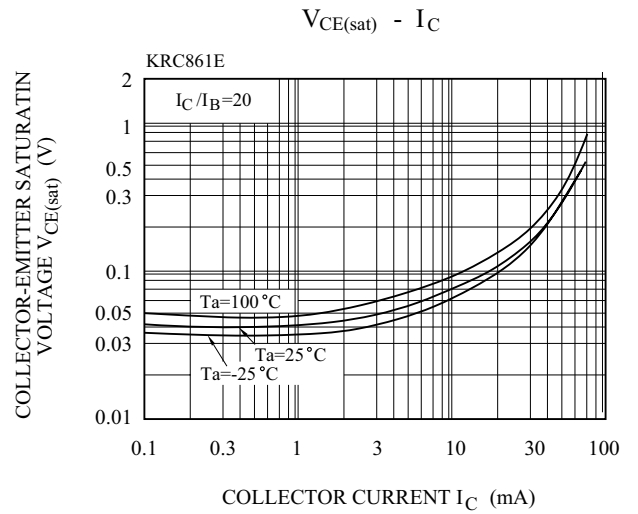
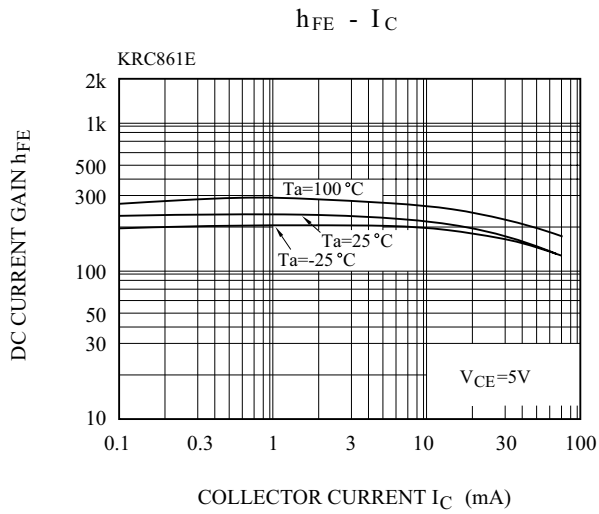
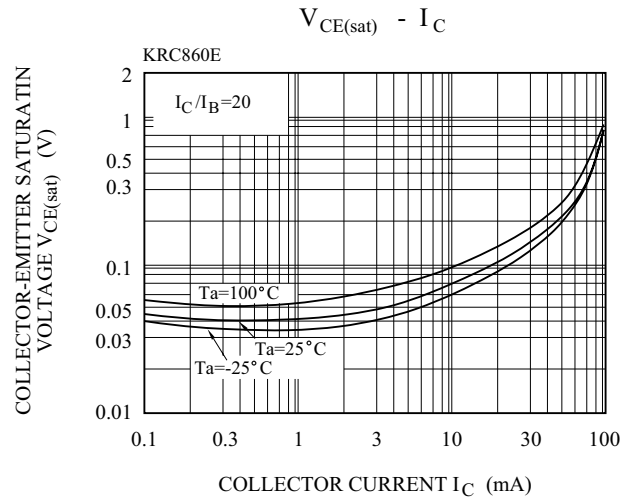
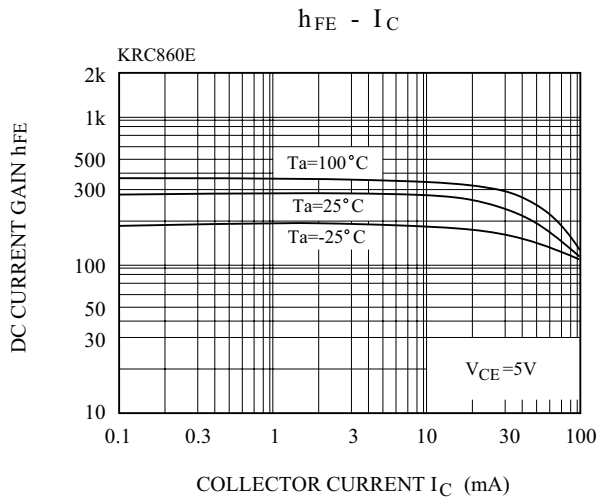


KRC860E~KRC864E

ELECTRICAL CHARACTERISTICS (Ta=25 °C)

| CHARACTERISTIC | | | SYMBOL | TEST CONDITION | MIN. | TYP. | MAX. | UNIT |
|----------------|--------------|---------|-----------|---|------|-------|------|---------|
| Switching Time | Rise Time | KRC860E | t_r | $V_O=5V$ $V_{IN}=5V$ $R_L=1k\ \Omega$ | - | 0.025 | - | μS |
| | | KRC861E | | | - | 0.03 | - | |
| | | KRC862E | | | - | 0.3 | - | |
| | | KRC863E | | | - | 0.06 | - | |
| | | KRC864E | | | - | 0.11 | - | |
| | Storage Time | KRC860E | t_{stg} | | - | 3.0 | - | |
| | | KRC861E | | | - | 2.0 | - | |
| | | KRC862E | | | - | 6.0 | - | |
| | | KRC863E | | | - | 4.0 | - | |
| | | KRC864E | | | - | 5.0 | - | |
| | Fall Time | KRC860E | t_f | | - | 0.2 | - | |
| | | KRC861E | | | - | 0.12 | - | |
| | | KRC862E | | | - | 2.0 | - | |
| | | KRC863E | | | - | 0.9 | - | |
| | | KRC864E | | | - | 1.4 | - | |

KRC860E~KRC864E



KRC860E~KRC864E

